



Westwood Building, Chelsea Creek
Fulham SW6

GARTON JONES.COM



Westwood Building, Chelsea Creek Fulham, SW6

GARTON JONES.COM

11 Park Street
Chelsea Creek
London
SW6 2FS

Sales +44 (0) 20 7824 7090
paul@gartonjones.com
www.gartonjones.com

£675 Per Week

Stylish Furnished Manhattan Apartment with Boulevard Views - Online Video Available

An exceptional opportunity to rent this stylish furnished Manhattan apartment, located on the first floor of the sought-after Berkeley Homes dockside development at Chelsea Creek. Offering 476sqft (43sqm) of thoughtfully designed accommodation, the apartment features an open-plan lounge with a custom-designed shaker-style kitchen, complemented by access to a private balcony overlooking the landscaped boulevard. The bedroom area includes built-in wardrobes and is separated from the living space by a sliding door for privacy and versatility. A luxury bathroom boasts bespoke porcelain floor and wall tiles, creating an elegant, contemporary finish. Exclusive membership to the Halcyon Club for residents of King's Tower and Westwood House, which includes: Private cinema, Meeting rooms, Residents' spa with fully equipped gym, Swimming pool, sauna & steam room, 24-hour concierge service, Landscaped communal gardens.

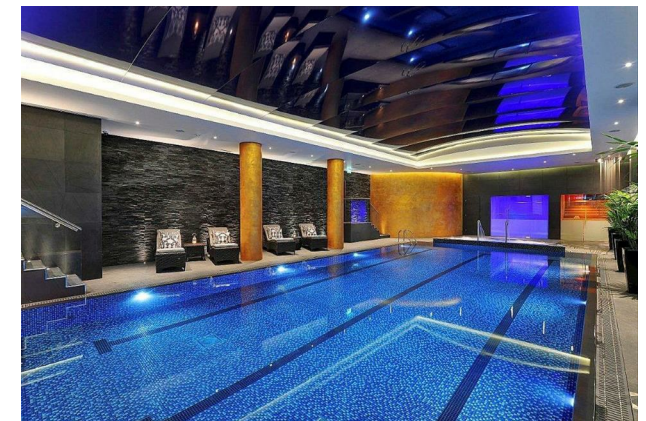
Deposit - 5 Weeks Rent

12 - Month Contract

Council Tax — London Borough Of Hammersmith & Fulham Council — Band E

EPC B (81)

- Manhattan Apartment
- 467sqft (43.4sqm)
- Stylish 1 Year Old Apartment
- Modern Kitchen With Integrated Appliances
- Furnished
- 1st Floor With Lift
- Balcony Overlooking The Boulevard
- 24 Hour Concierge, Gymnasium & Spa
- Close to Imperial Wharf Station
- EPC B (81)

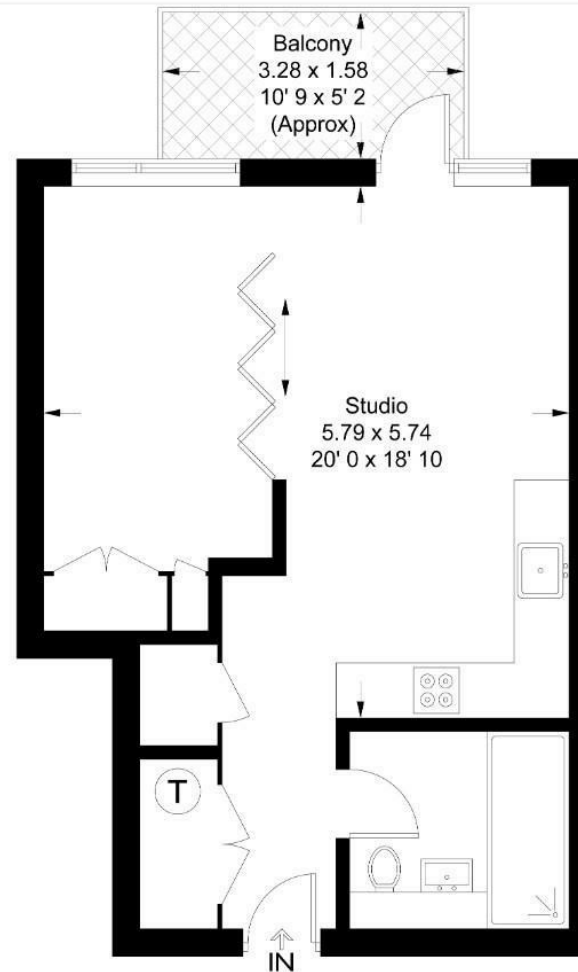


EPC certificate available on request.

Westwood Building

Approximate Gross Internal Area = 467 sq ft / 43.4 sq m
Balcony = 57 sq ft / 5.3 sq m

GARTON JONES
LONDON



First Floor

This plan is not to scale and must be used as layout guidance only. All measurements and areas are approximate and should not be relied upon to provide accurate information. This plan must not be relied upon when making property valuations, design considerations or any other such relevant decisions. We accept no responsibility or liability (whether in contract, tort or otherwise) in relation to any loss whatsoever arising from or in connection with any use of this plan or the adequacy, accuracy or completeness of it or any information within it.



